



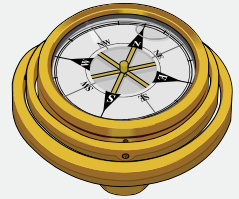
the Binnacle

Newsletter of the Lake Champlain Yacht Club, Inc.

Commodore: Jill Burley July 2011

Binnacle Editors: Tony Lamb

<http://www.lcyc.info>



UPCOMING AT LCYC....

Join us for a **MEMBER POT-LUCK** this Wednesday, 6/29! Grills start firing up at 5:30 pm. Bring your own grill items and a side dish or dessert to share with others. Hope to see you then!

* At 6pm on Thursday, 6/30, is the **ANDY HORTON RULES SEMINAR**. It is sponsored by Etchells Fleet 25 and the LCYC Regatta Committee. All members of the Lake Champlain racing community are welcome. Light fare and drinks provided.

* **ALL HANDS WELCOME**...we are changing to **NEW DINGHY DOCKS** on Saturday, 7/2, at 8am. It should only take a couple of hours. We could your help so that everyone can enjoy the holiday weekend - thank you!



Commodores Corner

Wow! What a strange and unusual start to the season we have had. Our new retaining wall has certainly been put to the test, as a sea wall!

Thanks All for another Workday of good work. The rain held off and the record high water did not slow things down. Surprisingly, everything went as usual with the exception of hooking the docks up to the shore. ...the proposed By-law changes were voted on and accepted by the membership. ...and we all enjoyed a chili lunch! Great job kitchen crew!

With the harbor virtually empty, the following weekends and weekdays were mini workdays. ... new fencing around the dumpster ... new waterlines on the main dock ... new dinghy dock sections ... rigging Jr. Sailing boats ... yard and brush clean up ... and yes, finally installing the ramps to the docks, as the water receded.

Despite the high water and lack of boats, the skies cleared for the BOG to welcome new members at our 'New Members Orientation'. The Opening Cocktail Party was another beautiful evening with plenty of good food, conversation and sunny skies! Thank you all hosts and helpers.

Dock access and launch service were delayed about a month. Our stewards took this in stride and actively looked for additional projects they could do around the Club. Launch service started from the Jr. Sailing dock. As the Shipyard started launching boats we resumed normal hours on the 13th (good "call" Brett), and last Sunday morning, the 19th, Doug White happily phoned me to say "The docks are open!"

A number of races have been cancelled and some postponed. The Wednesday night A- series turned into two practice races and the June Burger Burn was rescheduled to the 29th as a 'bring something to grill and something to share' – open to all.

The Board continues to work hard managing the club facilities while maintaining and improving financial controls. However, one of the hardest jobs is to ask members to obey club rules. Please help us out - we are all stewards of the club.

A few quick reminders:

Park on the lawn only when there is no space in the parking lots.

Dogs must be kept on their leash, always.
Clean up before you leave.
The Dinghy Docks are for dinghies, not power boats.
Space at the main dock is limited and boats should not be left unattended.
Air Conditioners should not be run off shore power at the docks
Smoking is not allowed in or around the Club House.

A couple new things this year: We have a short section of the Jr. Sailing dock available as a temporary tie-up and rigging area, so the Work dock and launch area can remain clear for launching boats. The Landau family has thoughtfully donated money for a Jr. Sailing Scholarship Fund as well as a beautiful teak bench in Steve's memory. Thank you.

And Hey! last count, there are nine Lasers at the Club! Is this a fleet???

Happy 4th of July! and see you at the Boat Tour and Tag Sale July 8th.

Jill Burley, Commodore
(with a little help from Bob and Skip)

Scuttlebutt * (another word for Editor's Notes)

Tony Lamb

Recently I received the following email concerning an ad for the Binnacle. Since we do not have a specific rule, I would welcome thoughts on how we might deal with these issues in the future:

Dear Tony: We are selling our home and planning to move to a retirement community in Middlebury. Hence, our residence adjacent to LCYC is available. Would you consider the following announcement for the next Binnacle?

HOME for SALE. 4 Bedroom, 2 1/2 Baths, 1.6 acres with lake view and access adjacent to LCYC. Contact Brian Boardman at (802)343-0971 or Larry Coffin at (802)985-8221

*Water for immediate consumption on a [sailing ship](#) was conventionally stored in a **scuttled butt**: A [butt](#) (cask) which had been [scuttled](#) by making a hole in it so the water could be withdrawn. Since sailors exchanged gossip when they gathered at the scuttlebutt for a drink of water, scuttlebutt became [Navy](#) slang for gossip or rumors. (As per Wiki.)



RICK TURVEY Rick is a sophomore at Assumption College in Worcester, Massachusetts. He hopes to pursue a major in English. He resides with his family in Essex Junction, and enjoys racing their Etchells, *Band on the Run*, and skiing in the winter.



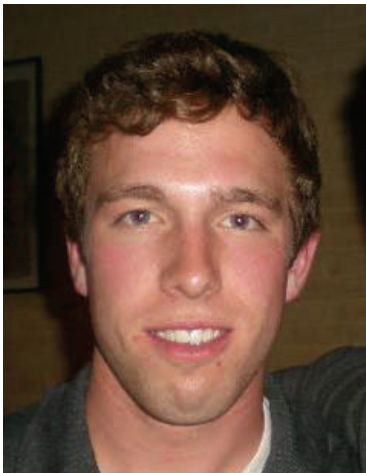
THOMAS COCHRANE Tom is a sophomore at the University of Vermont where he studies Engineering Management. He is originally from Shelburne. His activities include tennis, golf, skiing, boat building, and traveling.



WILLIAM DOWLING Will is a new member to the steward crew, but worked as the Wednesday night race steward last summer. He is sophomore at the College of the Holy Cross in Worcester, Mass. He hopes to pursue a major in Biology and Pre-medicine. He resides with his family in Shelburne, and enjoys playing the banjo, guitar, and hockey.



KYLE PAGANELLI Kyle just graduated from Rice High School in June with two state championships in football and lacrosse. In the fall, he will attend the University of Vermont and plans to study Secondary Education, specifically Political Science and History. He plays on an indoor box lacrosse team during the summer, and loves to ski in the winter. He lives in Shelburne.



NICK BRYAN Nick will join us as a part time steward for the latter half of the summer. He has recently been studying abroad in New Zealand, and is a senior at St. Lawrence University in Canton, New York. He lives in Shelburne, and enjoys playing lacrosse.



AMY BOERMAN Amy is a senior at the College of the Holy Cross in Worcester, Mass. where she studies English and Pre-medicine. She lives in Shelburne, and enjoys wakeboarding, tennis, and swimming in the summer, and figure skating and skiing in the winter.

2011 LCYC REGATTA SCHEDULE (REV JUNE 18, 2011)

JUNE 22 PRACTICE RACE

JUNE 27 E3

JUNE 29 PRACTICE RACE

JULY 6 B1

JULY 13 B2

JULY 17 E4

JULY 20 B3

JULY 24 LADY SKIPPER RACE

JULY 27 B4

JULY 30 DOUBLE-HANDED RACE

AUGUST 3 C1

AUGUST 6 LADIES CUP

AUGUST 10 C2

AUGUST 13 TEA KETTLE RACE

AUGUST 17 C3

AUGUST 20 SCHUYLER ISLAND RACE

AUGUST 21 E5

AUGUST 24 C4